



2022 Summer Edition 159

South Leigh & High Cogges News

Update From The Parish Council Chair

Another busy quarter has passed, the sun is shining and are we approaching the Queen's Jubilee celebrations - please come and join us, the team has worked incredibly hard to give you a day to remember. On a personal note, I still have the photos that were taken at the Silver Jubilee - we had a wonderful day and this is an even more momentous occasion! If you're new to the village or if you haven't attended village events before, come along and introduce yourself - the more the merrier!

Shores Green A40

The Parish Council has spent yet more hours on the A40 dual carriageway/Barnard Gate roundabout and the Shores Green junction proposals. (Please see page 5 for more information)

Solar Farms

The Tar Farm revised planning application has now been submitted - this takes into account the various changes that we have negotiated.

The 12 Acre Farm is nearing completion but won't be commissioned until December/January. Once this happens they have agreed to pay a Community Benefit grant of £40,000 and we will be coming to you over the next months gathering views about the way you feel this should be spent.

Power Cuts

We have applied for a grant to enable us to provide a generator at the village hall - if/when future power cuts occur this will enable the hall to be used as our emergency centre. We are hoping to be able to provide heat, lighting, use of the hob and microwave, kettle and electrical points but are unlikely to be able to have enough power to use the ovens. We are in the final stages of producing a formal emergency plan which will include contact numbers and details.

Footpath Wardens

Anne and Russell Cherry have done a sterling job maintaining and reporting problems with our footpaths for many years but feel it is time to step aside - we would like to thank them on behalf of the parish. Kindly, Darcy and Evadne have volunteered to take over.

Grass Cutting

We have had to find new contractors for the cutting of the grass at the football pitch - this has been quite a struggle - but we have now found someone. I realise that the first two cuts haven't produced the effect that we are after - that is more my fault than the contractor. The current state is that they will come and cut an area the size of the football pitch much closer and collect the cuttings, the rest of the field will be left as it is now. If this isn't sufficient we will change the arrangement again. The cutting of grass throughout the village costs the parish (and therefore you) a large percentage of our budget. (continued Page 2)



INSIDE THIS ISSUE

Parish Council Update, Thames Water & Mobile Signal.....	2
Vicar's Letter,	3
Bellringer's.....	4
Shores Green/A40 & South Leigh Strollers..	5
Nature Notes	6
Nature Notes	7
Platinum Jubilee.....	8
Flower & Produce Show.....	9
Recipes.....	10 & 11
The Thames from Osney to Eynsham, Village Hall, Club 100, South Leigh Charity.....	12 & 13
Parish Warden Update & Quiz.....	14
Parish Warden Invite, Walk Map, Village Hall, South Leigh Charity, Club 100.....	15
Quiz Answers, Copy Deadlines, South Leigh Photographer & Heathers' Garden.....	16,

PARISH COUNCIL UPDATE

Misuse of the Bus Shelter

It has been reported that the bus shelter in the centre of the village is possibly being used for late night gathering and the smoking of illegal drugs - this has been reported to the police.

Works at the Junction at the Old Railway Station

Although this looks a bit bleak currently, the work was undertaken to remove roots that were breaking the drainage pipes through that area. All has been repaired and the undergrowth will soon grow back. The land belongs to the Bury family and we would like to express our thanks for them undertaking this work. If anyone is of a mind to scatter some wildflower seeds - I'm sure it would be appreciated by all, but could you contact the Burys/Wilsons to check first.

Eynsham Estate

I think most people know that a significant amount of the land around the parish is owned by the Estate. It is their responsibility to keep footpaths/bridleways etc accessible. Could we please ask that if significant work needs to be done you contact the parish council who in turn will contact the Estate - please don't do the work yourself. It is their land; you will not be covered for any accident and technically you're trespassing.

We are trying to have a more co-operative relationship with the Estate now it is under new management.

Equally, the verges are in the ownership of OCC and again individuals should not be cutting them.

I do appreciate that any work that has been done is done with the best of intentions.

Parish Council Annual Meeting and Parish AGM

Our regular monthly parish council meeting was on the 26th May - we also presented the annual accounts for approval by the PC at the PC Annual Meeting. Once approved these accounts are sent to the auditors and posted on the website. Once posted, there is a period of time for your comments to be made (all of which you will be notified of). Once this procedure is complete, we will arrange a Parish AGM and you will be invited to raise any concerns, make any comments on any subject that you wish. No need to have it on a agenda, although prewarning would allow us to have any facts and figures to hand.

Nick Brooks, nicky@southleighandhighcogges.gov.uk

A Tale of Two Companies Dick Pears

(A story of woeful service and adept buck passing - corporate ethics in 21st Century)

Mobile Signal

After the intervention of Robert Courts - EE are investigating - of course they already have (or said they had) and indicated that there were two alternative possible solutions for the signal proceedings from Oxford Hill. That was a matter of some surprise to the current investigation until I sent them an email from their technical director - who must have been an ethereal spirit (although able to use email) because Technical Support in Merthyr Tydfil had not heard of him. So we await - as we already have.

Thames Water



The PC agreed a six point plan and as part of that plan David Hindley has written to all the non-executive directors and had a response from the CEO's office. There are glimmers in the darkness but rest assured that Thames Water is monopolistic rhino skinned monster and will only respond when put under pressure.

David Hindley and I and others in the village are working behind the scenes on that but if that fails **we will need your help.**

So the moral of our times - corporations have limited interest in living up to the glib promises of their advertising and respond only when there is a threat to their finances or reputation (in the case of Thames Water - that might be a limited threat as their reputation is in tatters).

View From The Vicar

As I write this our minds are filled with thoughts of the coming Platinum Jubilee celebrations for Her Majesty the Queen. Seventy years on the throne is an amazing achievement, but I was surprised to learn (from Wikipedia!) that she is only the third longest reigning monarch – however, by the Jubilee weekend she will be only days off becoming the second.

Several years back I visited the Royal Yacht Britannia in Edinburgh and the thing which stuck with me was how hard the Queen worked, even when on the yacht in a far flung part of the world. That is maybe what our Queen is most famous for: a lifetime of faithful service to our nation and the wider commonwealth. Indeed, for the Queen's 90th birthday a booklet was produced in which she wrote the following in the forward:

In my first Christmas broadcast in 1952, I asked the people of the Commonwealth and Empire to pray for me as I prepared to dedicate myself to their service at my Coronation.

And what a life of service it has been, the Queen is constantly travelling, attending civic events, politely meeting strangers, and reading papers. Even when she celebrated her 90th year she was still working over 40 hours a week. But despite that long and at times gruelling service, in over sixty years there is no record of her losing her temper.

In her 2012 Christmas speech she mentioned the key to her life of service. The Queen is committed to follow the ways of Jesus, her King. She reminds us in that speech that Jesus said that he came 'to serve, not to be served.' A truly amazing statement of a man who claimed to be God himself. God came to earth to live among us, not to be served by us but instead to serve us. The Queen, likewise, though in a position of such prestige, sees herself as a servant of her people, not as someone to be served by them. Her reign is modelled on the reign of Jesus.

To live a life of service is not an easy thing, that's why the Queen asked for her people's prayers as she began this role in 1952. God is the one who has helped her in this life of extraordinary service. In her forward to the book, I mentioned earlier, the Queen continues:

I have been – and remain – very grateful to you for your prayers and to God for his steadfast love. I have indeed seen his faithfulness.

My prayer for you and all in South Leigh is that you, like Her Majesty, will know for yourself the steadfast love of God and his faithfulness. And through knowing God and his love, you too might be able to live a life of service.



South Leigh Flower & Produce Show Returns!

South Leigh Flower & Produce Show will resume this year on **Saturday 10th September**. Please make a note of the date in your diaries. The schedule is on website.

Liz Ashwell/Richard Law



Hedgehog Report

There will be no hedgehog report this quarter. Our correspondent is being plagued by cats who are eating the hedgehog food, following her around the garden into her hen enclosure

BELLRINGERS' REPORT MAY 22

Over the winter, we were delighted to welcome four enthusiastic ringers from Witney Tower to our practices on alternate Wednesday evenings: Ruth Leatherdale, Dan Neal, Matthew Porter and Carol McRobbie. Their continued regular support has meant that the practices have been able to flourish despite absences from South Leigh ringers due to illness, Covid concerns and family circumstances. A further bonus has been extra tuition on some Saturdays from the experienced Marston band of ringers and we look forward to producing a suitably splendid sound with them at the Jubilee weekend in June.

In this edition, we would like to share a bellringers' report written in 1995 by David Smith, the previous Tower Captain. He describes the art of bell ringing so much more eloquently than any of us could. David wrote reports several times a year every year from about 1995 to 2014. The reports can be read in a file in the ringing chamber at St James.

Extract from a 1995 report by David Smith, previous Tower Captain, St James the Great.

'If I tell you that my musical instrument weighs nearly half a ton, spins in a circle and sounds a second after I have set it going, you might reply "How very odd". I would have to admit you were right, especially if I go on to say that it is at the end of 20 feet of rope. Strange, too, is the fact that this way of ringing church bells is largely English. There are about 5,200 'Rings' of bells in England, 200 in the rest of the U.K., and the rest of the world can only muster 90. Bells in the Low Countries are often Carillons - sets of up to 60 bells played by one perspiring man at a huge keyboard. Other Continental Churches and Cathedrals utter a splendid random Bongling, but in England we have the orderly glory of Change Ring-

ing. This is never a tune and tries hard not to be a bongle, but is a beautifully regular and ordered sequence of Changes (each bell sounding once) with no two changes alike.

It all started sometime in the early 17th Century. With two bells you can go 'Ding Dong', but after a while that is the same as 'Dong Ding', and a bit boring. Add a third, and tune the bells to a scale, and there are 6 possible arrangements or Changes; with 4 bells, 24; and with 6, 720. The problem was that to produce consecutive changes some bells had to ring slow and some quick, and that was impossible because, a swinging bell is like a clock pendulum - it beats regular time. Eventually some genius thought of swinging the bell in a full circle, balancing it on its head upside down (looking like a teacup). Poised thus it could be made to ring slower or quicker and that is the way it is today. We stand in South Leigh tower, each holding one of 8 bell ropes, looking at the person who will ring the smallest bell. "Look to!" is the call, "Treble's going ... she's gone", and we all pull off in sequence. 20 feet above our heads 8 bells spin in a full circle, 8 nicely spaced notes burst out through the tower louvres, all 8 bells balance upside down again, and at once we commence the next change. So it goes on: 30 changes a minute. We listen to what we have done, watch what we're doing, and think about what we will do next in the pattern of changes. A tremendously satisfying skill, an intense coordination of hand, eye and mind, and when well, done a delight to hear. But it is not easy, so teaching bell handling and control is quite an art as well and must be done properly if the new ringer is to succeed. It is like being taught a good 'swing.' at golf, tennis or clay-pigeon shooting. Get it right at the beginning and the results come much more easily. Just as well, because making a mistake is a very public matter, as you may have heard! Do visit us at any time; we would love to show you what happens.'

Evadne

SHORES GREEN/A40

Nicky Brooks

OCC have installed traffic monitoring throughout the village - this will help us establish a base line for the number of cars using the village roads and where they are going. After the junction is completed another survey will be done to see how much the traffic has increased/or not.

This is a great step forward as at the start of our conversations they refused to accept that the junction would have an effect and will help us establish a base line for road use

OCC have confirmed that we will be in the first tranche of villages given a 20mph speed limit (we were due to be way down the list) and although one can be sceptical about the effect it will have - it does give us other options and may have the effect of people dropping their speed further than otherwise.

OCC have agreed to supply traffic calming measures throughout the main village roads and have asked us for suggestions - we will be coming to you shortly to gather your views.

We have talked extensively to OCC about mitigation for the effects that the road changes will have on the village - our main objective is to get them to introduce more mitigation to prevent noise, light and traffic pollution to our rural

setting that is protected by our NP. They are making the right noises, but we are yet to pin them down.

You will know that a new roundabout is proposed at Barnards Gate - the road leading from the village to the A40 via Green Farm. The original plans showed a spur coming off the roundabout and meeting the South Leigh Road. Sometime ago we gathered your views about the possibility of closing that road to help to stop rat running through the village on the understanding that 4-way access to the A40 would be possible from the new Shores Green junction. This idea was met positively and I'm glad to say that at this moment OCC have agreed to place bollards stopping access to the village from that junction. These bollards will be removable for either emergencies or for farm vehicle access. At the moment OCC are insisting that they build the link between the current road and the roundabout. We will continue to fight this along with the other matters.

At the Parish Council annual meeting on 26th May we showed maps showing in more detail the effect that these road changes will have on our parish. If you would like to see anything please contact me.

SOUTH LEIGH STROLLERS

Eight of us walked around Tar Wood on Sunday 8th May and four of us round the lakes on Monday 9th.

In view of the numbers, we plan to offer either a weekday walk or a weekend one next time rather than both

We will do a lovely two hour walk in the Evenlode Valley starting at East End North Leigh and returning to there via the Roman Villa. As a bonus attraction, Matthew Lee has kindly agreed to arrange for the mosaics to be opened for us to enjoy.

The 2 dates are **Sunday, July 10th and Monday, July 11th at 2pm**. Please let us know which one you would be able to make and we will email all who respond to advise which date attracted the most votes. We also need to hear from you to organise car sharing to East End.

Hope to see you then

David davidreevestaylor@gmail.com

Russell acherry1@tiscali.co.uk



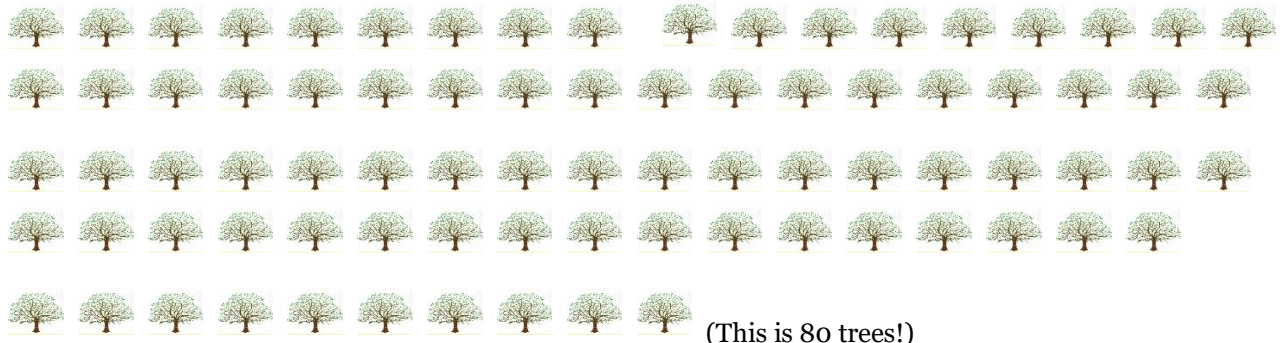
NATURE NOTES

An idea in the pub leads to 80+ trees plantings

It's been two and a half years since we launched the South Leigh Forest Restoration project, which was conceived by David Brooks in the pub over a beer.

In that time, we have had some terrific successes, but some disappointments, too.

The successes are the 80-plus trees that are now in full leaf and flower in sites that include the Football Field, at Just Cartridges' drive, along Chapel Road, up Church End from Margery Cross, and in Stanton Harcourt Road. In addition to these, there are the 1,000-odd trees that have been planted privately.



(This is 80 trees!)

Thank you!

We are most grateful to TOE, (Trust for Oxfordshire Environment) for the grants that we have been awarded, thanks to Grunden Waste Management, as well as contributions from private donors. We are also most grateful to the Eynsham Park Estate and their agents, Savills; Phyllis Bromme, David and Trish Bury; Rachel Murphy, Richard Carling, and all those who have helped finance, plant and water our lovely trees. Thanks too to Mike Kirk of Hadingham Kirk, Garden Design and Landscaping, for advising us and for giving us the gorgeous tall elms at Just Cartridges, as well as many of our other trees at a super price.

A Change In Our Objective

Reluctantly, we have had to change our lofty objective of planting 200 trees a year for five years because of the new government agricultural policy. That is because the government will now be rewarding land owners to plant trees themselves (rather than giving them crop subsidies) and so land owners are reluctant to release land to us on which they could plant trees and receive the incentives, themselves. However, no one really seems to understand the new rules yet, and so this will take time!

In the meantime, the Parish Council has agreed to our modified objective, which is to plant as many trees as we possibly can on land that is made available to us. This is not so precise, but the spirit has not changed and we shall keep in close contact with our local land owners, whose support has been terrific.

All our plantings this year will be registered on the official website of the 'Queen's Green Canopy' website to mark the 70th Jubilee Anniversary of her reign.



NATURE NOTES

Eleven trees are flourishing in Chapel Road.



A rowan in flower at the Football Field (left), and one of the three elms at Just Cartridges' drive (right).

(Below)
Founder, David Brooks, planting at Church End with Harry Martin.



Fifteen trees are all doing well at the Burys' Triangle in Stanton Harcourt Road, (above left). And five new plantings along Church End from Margery Cross have burst into life (right).



For the fridge door!

SOUTH LEIGH & HIGH COGGES PARISH COUNCIL

QUEEN'S 70th JUBILEE CELEBRATION PROGRAMME

Here we go with the fun and games for the Queen's 70th Jubilee celebrations in the parish! Our thanks go to the National Lottery Community Fund that is supporting our celebrations.

- **From Friday, 20th May: Village decorations.** We have 400 metres (!) of bunting up around the Village and on all the recently painted bridges. Maybe put up your own too?



- **From Friday, 27th May: 'Coronation' themed Scarecrow Competition.** **Register by 26th** with Caroline A. (CarolineaCE@outlook.com). Winner announced on Sunday afternoon at VH.



- **From Friday, 27th May: 'Coronation' themed bus shelter.** Take family photos with the newly crowned Queen on the balcony and inside Buckingham Palace! Kids can draw her in a picture gallery at the Palace.



- **Thursday, 2nd June: Formal 'Proclamation' and Beacon Lighting** starting 8.00pm. **Free Pizza and nibbles at the Village Hall,** Cash bar.

Lighting of the Community Beacon at 9.15pm.

- **Friday, 3rd June:** Provisionally, a folk music afternoon or evening at the pub.
- **Saturday, 4th June: 'Coronation' themed Float Parade starting 11.30am.** Decorate your cars, bikes, tractors, horses or whatever else and bring the whole family along! Dress up as Queens, Kings, Princesses, Princes, Ladies-in-waiting, etc. Make a float if you have a trailer. Shout if you need some bunting. To start at High Cogges and go via Margery Cross, Station Road, Lymbrook Close, Just Cartridges, Margery Cross, Church End and to terminate at the VH.



Fizz, courtesy of Nicky Brookes at the bus shelter.

Contact: martinspurrier@hotmail.com. Do join in or come out and watch!

On arrival at VH, Free BBQ sausages and first drink then cash bar. **Bouncy Castle,** for the kids, Splat the Rat, Table Tennis. Boule, Molkky etc. Village photograph.

Party at the Palace is on tv from 1 pm to the evening. We hope to have in on in the VH.

- **Sunday, 5th June: 2pm Bell ringing** at St. James the Great, **2.30pm short out-door Celebratory Service** conducted by our Vicar, Rev. Simon Kirby, **3pm tea and cakes Free at the VH.** 'Coronation' theme Quiz, 7.30pm, at the pub in the evening (Contact: Graham S: planning@soame.co.uk).
- **Later in the year: Cricket match SL v HC** (to be arranged).
- **Queen's Green Canopy: Tree planting:** All trees planted by South Leigh Forest Restoration will be registered on the virtual QGC map (<https://queensgreencanopy.org/>).

SOUTH LEIGH FLOWER & PRODUCE SHOW

EVERYONE PLEASE SUPPORT THE SHOW

To be held in the Village Hall on Saturday 10th September 2022
Entries to be brought to the Hall between **9.30am** and **10.30am**

ANY QUESTIONS, CONTACT 01993 703534

ENTRY FEE 20p. Not more than one exhibit per person per class.

CLASSES FOR YOUNG PARTICIPANTS (age to be stated)

- 1C An animal made from silver foil (aged 8 and under)
- 2C A painted stone (aged 8 and under)
- 3C Any plant, vegetable or flower grown by someone aged 16 and under living in South Leigh.
- 4C A sea creature - any medium (aged 16 and under)
- 5C Four biscuits (aged 16 and under)

OPEN CLASSES (all ages)

- | | |
|--|--|
| 1 Specimen Rose | 22 Longest Runner bean |
| 2 Best Perfumed Rose | 23 A vegetable that has gone wrong |
| 3 Vase of three Perennials (1 variety) | 24 Heaviest Potato |
| 4 Vase of three Dahlias (1 variety) | 25 6 Eggs |
| 5 Vase of six sweet peas | 26 Jar of Home-made Chutney |
| 6 Foliage Pot Plant | 27 Jar of Home-made Jam |
| 7 Indoor Flowering Pot Plant | 28 Lemon crunch cake – recipe given |
| 8 A home-grown Cook's basket min 6 items | 29 A loaf of bread |
| 9 Cucumber | |
| 10 Three Carrots | 30 Flower Arrangement - |
| 11 Three Potatoes | “The NHS” - max size - 18”x18”x18” |
| 12 Three Onions | |
| 13 Six Tomatoes | 31 Photograph un-mounted - |
| 14 Six Cherry Tomatoes | “Covid” - max size - 5” x 7” |
| 15 Six Runner Beans | To be judged by the public |
| 16 Six French Beans | |
| 17 Three Beetroot | 32 A picture or sculpture - any medium - |
| 18 Three Courgettes | completed in the last 12 months |
| 19 Two Squash | To be judged by the public |
| 20 3 Cooking Apples | |
| 21 3 Dessert Apples | |

Name	1c	2c	3c	4c	5c	1	2	3	4	5	6	7	8	9	10	11	12	13	14		
	15	16	17	18	19	20	21	22	23	24	25	26	27	28	29	30	31	32			
20p per entry																					

Please fill in your name and tick box for each class you wish to enter. Tear off and submit along with payment to the stewards on arrival at the hall. Thank you.

Total money

Seasonal South Leigh Recipes

When the first warm days arrive, the choice of fresh fruit and vegetables inspires a different kind of cooking and, when the weather allows, eating *al fresco* is always a pleasure! Here are a couple of savoury summer tarts. An upside-down tomato and caper tart that is especially useful if you have a glut of tomatoes, and another, using asparagus, pea and mint for a wonderful summer flavour. Both are made using ready-rolled puff pastry, making them super-easy to prepare but you could make your own shortcrust for the asparagus tart if you prefer. Follow with this light and refreshing summer raspberry fool - scented with a hint of aromatic cardamom and orange, and perfect for a summer's day. Enjoy the summer sunshine and all the wonderful produce we have on our doorstep. Happy days! EL

Roasted Tomato and Caper Tart

Serves 2 - 4

If you can find yellow and red tomatoes the tart will look especially good. Slowly baking the tomatoes first will really intensify their flavour and is well worth the extra step.

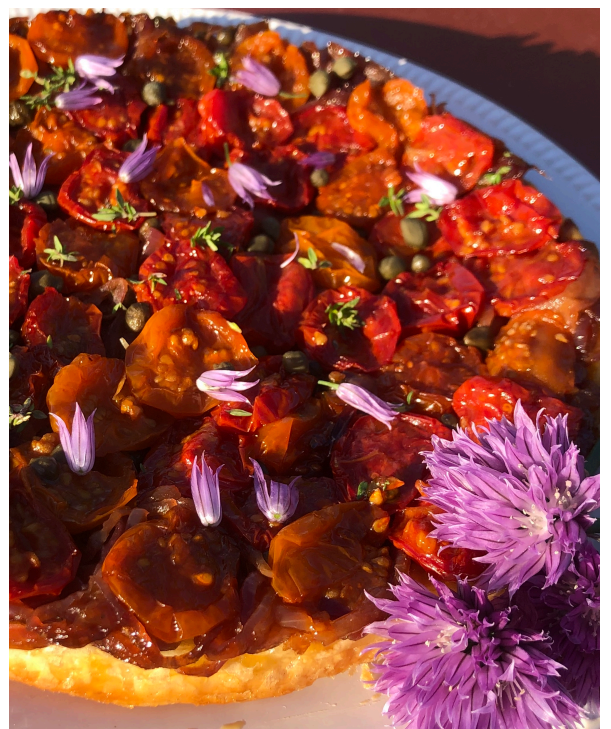
500g small tomatoes, halved
salt and black pepper
olive oil
2 red onions, finely sliced
1 tbsp balsamic vinegar
1 tsp soft brown sugar
1 tsp fresh thyme leaves
1 tbsp butter, for greasing
1 x 240g pack of ready-rolled puff pastry
2 tps small capers, drained
Chive flowers, to finish (optional)

Heat the oven to 120°C / 100°C fan / Gas ½. Lay the tomatoes cut-side up on a lightly oiled baking tray. Season with salt and pepper and drizzle with a little olive oil. Roast them for 3 - 4 hours, depending on the size of the tomatoes - small ones won't take as long, so remove them first.

Heat a tablespoon of oil over medium heat and add the sliced onions. Fry gently for 10 minutes or so until they are soft, then add the vinegar, sugar, thyme and a little seasoning. Continue cooking until the onions are soft and sticky.

Generously butter a 20 - 24cm shallow cake pan. Lay the tomatoes cut-side down in the pan, squeezing them all in. Scatter over the capers followed by the cooked onions.

Cut a circle of pastry slightly larger than your pan and gently lay the pastry over the tomatoes and onions, loosely tucking in the sides of the pastry. When ready to cook, heat the oven to 220°C / 200°C fan / Gas 7 and bake for 20-25 minutes or until gold brown and crisp. Allow the tart to cool for about 5 minutes, then run a knife around the edges and carefully turn out onto a serving plate. Scatter some chive flowers over the top (optional) and serve at room temperature.



Asparagus, Pea & Mint Tart

Serves 4 - 6

320g ready-rolled puff pastry
300g asparagus
100g petit pois peas, blanched and drained
300ml double cream
2 small eggs, beaten
¼ tsp grated nutmeg
2 tsps dried mint or 2 tbsps fresh mint, finely chopped
black pepper
100g gruyere cheese, finely grated

Line a 22cm loose-based, fluted flan tin with the pastry, trim the edges and set aside. Snap off the woody stems of the asparagus and discard, then lightly steam the asparagus for no longer than four minutes - less if they are thin spears. Lay on some kitchen towel to drain and allow to cool.

Heat the oven to 200°C / 180°C Fan / Gas 6. Prepare the filling by cutting off the first few inches of each asparagus spear and reserving these tips for later. Place the remaining asparagus in a food processor together with the peas, cream, eggs, nutmeg, mint and black pepper. Blitz in the processor for a minute or until the vegetables are all very finely chopped. Add the cheese and blitz again for a moment.

Pour the filling into the pastry case and arrange the reserved asparagus tips on top. Place in the hot oven and bake for 20 - 25 minutes or until the pastry is crisp and the tart is nicely risen and brown. Reduce the temperature of the oven to 170° / 150°C Fan / Gas 3 and cook for a further 10 minutes. Allow to cool slightly before serving or serve at room temperature.

Raspberry, Orange and Cardamom Fool

Serves 6 - 8

I am still using last summer's raspberries from the freezer and they work really well in this recipe. Of course you can use freshly picked raspberries and, if I'm honest, I think they have the edge on flavour - still holding some of that summer sunshine.

400g fresh or frozen raspberries
grated zest of 1 orange
seeds from 5 cardamom pods, crushed
300ml double cream
2 - 3 tbsps icing sugar (depending on the sweetness of the fruit)
500ml Greek yogurt
To serve: fresh raspberries and raspberry jam

Set aside 6 - 8 small dessert glasses or bowls. If using fresh raspberries, reserve a few for using on top of the finished fools.

Using a food processor, blitz the raspberries with the orange zest and crushed cardamom seeds until smooth. Whisk the cream and icing sugar together until soft peaks form, then gently fold in the yogurt - in two or three goes. Follow with the raspberry mixture, gently filling it in half at a time to keep as much air in the mixture as possible.

Divide the mixture between the glasses or bowls and refrigerate for at least 2 hours. Top with a swirl of raspberry jam and a few fresh raspberries.



The Thames From Osney to Eynsham

A linear walk along the Thames Path, using 'bus to start point. The Thames Path is the 1st National Trail to follow a river the whole of its length—truly a journey through history. Originally, the trail ended at the Thames Barrier, 180 miles or so from the river's source near Cirencester, later extended by 30 miles to Gravesend.

Distance : 6 miles (7 ¾ miles with detour to Binsey church). Allow 3 hours (4 hours with detour), excl. stops. Wear stout footwear. Some sections muddy after heavy rain. Avoid in flood conditions.

Parking : On Wharf Lane, off B4044 near The Talbot Inn, Eynsham (beyond yellow lines!)-G.R. SP440090. Catch the S1 'bus (very frequent service) & alight at Osney Island stop on Botley Road.

Walk ahead a short way from 'bus stop & after crossing river go L at finger post ('Thames Path'), & continue ahead over arched bridge crossing Sheepwash Channel—which was widened & dredged to provide a link to the Oxford Canal to enable the Canal Company to also trade from their Oxford wharves onto the Thames. Along this channel is a swing bridge for the old railway line that once served the Oxford Rewley Road Station (on site of Said Business School) ; this station can still be seen—at the Bucks Railway Centre at Quainton near Aylesbury!

You soon pass through a pleasant wooded section then see Port Meadow on R. Keep straight ahead & cross river by distinctive bridge which, as plaque tells you, was "erected by public subscription through the exertion and during the shrievalty of Henry Grant Esquire. A.D.1865." You are now at Bossom's Boatyard, Medley, where there has been boatbuilding activity since ancient times. The Bossom family built boats here for over 100 years until 1945.

Continue alongside river & just past Medley Sailing Club the track off to L offers an extension to the walk (returning same route) well worth taking—to the delightful rural hamlet of Binsey, including The Perch (also reached by well signed path 350 yds further along Thames Path), & a lovely walk along a lane to Binsey's C12 church with its well. This church was built on the site of a Saxon church linked to Frideswide, the patron saint of Oxford, & is thought to be her resting place. It has a fine doorway, with dogtooth decoration, & there is a Norman font here. According to legend the well appeared in response to Frideswide's prayers & she used the water to provide a

miracle cure to a man's blindness (known locally as the "treacle mines", being Old English for healing).

Continue along Thames Path & as you approach Godstow Lock there is a fine view back across the wide expanse of Port Meadow to the spire of 'Phil & Jim' (St. Philip & St. James), with the octagonal tower of the Radcliffe Observatory building (now part of Green Templeton College) to its R ; this Grade I listed building was the University's astronomical observatory from 1773 to 1934.

Port Meadow was presented to Oxford's citizens by King Alfred, in return for their help in defending the area against the Danes , as a free common & preserved as such.

You soon reach the ruins of Godstow Nunnery, a Benedictine foundation in the early C12. Rosamund Clifford ('Fair Rosamund'), Henry II's mistress, was buried here towards the end of C12. The chapel is all that remains, & if you go round to L at far end of wall you get a better idea of the size of the site.

Go on to Godstow Bridge (Care ; narrow & often busy road), where a visit to The Trout (C16) is an option! It was on a boat trip up the Thames from Folly Bridge, Oxford to Godstow in 1862 that Charles Dodgson (pen name Lewis Carroll), Mathematics Don at Christ Church, told the story of Alice in Wonderland for the 1st time to 10 year old Alice Liddell & her 2 sisters, daughters of the Dean of Christ Church.

Cross road on Thames Path, pass under A34, & then stay on metalled path with Wytham Hill & Wood over to L (you pass below here later). As you approach King's Lock & house you can continue to hug the river by going through gate at waymarker on R, re-joining existing path just before lock. There is a small Visitor Centre at King's Lock which includes the lock's history ; also a seat & picnic table.

Just beyond lock the Thames channel on R leads to Dukes Cut, a ¾ mile link to the Oxford Canal. This link was built under the instruction of the 4th Duke of Marlborough, a large shareholder in the Oxford Canal, over land within his Blenheim estates to improve his source of income from the canal. Opened in 1789 Dukes Cut enabled the Duke to supply the whole of the Upper Thames Valley with coal from the Midlands, brought down the Oxford Canal &, via the cut, passing on up the Thames.

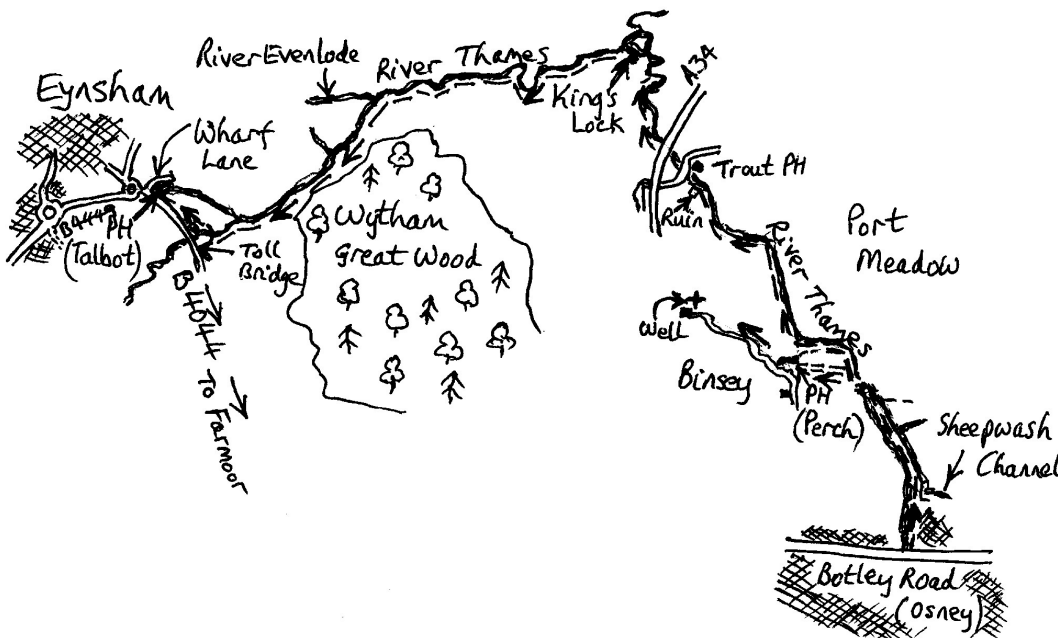
The Thames From Osney to Eynsham

Later, after a meandering stretch of the river & where the pylons opposite are at their nearest, the River Evenlode joins the Thames after its 45 mile journey through the Cotswolds from near Moreton-in-Marsh. At field end is information on the sustainable farming systems that have been developed in this area.

Beyond gate keep to path by river, below edge of Wytham Wood. The river leaves wood & after it bears R there is a narrow channel opposite. This is the Wharf Stream, which since the C13 was used to transport stone, coal, timber, hay, grain, salt & other goods from the Thames to the edge of Eynsham. Eynsham Wharf was a bustling port by the Talbot Inn, & the village prospered, particularly after Dukes Cut was constructed. The last boatload of coal arrived in 1925. There was a watergate (weir) where the Stream joins the Thames, & another one further along. These were placed with wooden paddles to control the water level & improve navigability; the round structure seen to L of Stream was the paddle store.

Later, bear R at waymarker ('Thames Path') to Eynsham Lock, with information boards. Cross lock & Thames weir on 'Permissive Path', then go L alongside river, cross bridge over stream & bear diagonally R across meadow to pass through gate to bring you back to the Talbot Inn! RC

MAP FROM OSNEY TO EYNSHAM



VILLAGE HALL

Village Hall Committee

Dorothy Carden – Noad
(Secretary)
703840
John Ashwell (Treasurer)
703534
Debi Diacon (Bookings)
773314
David Brown
703765
Sue Washington
775574
Caroline Auger
834899

Please contact the village hall committee if you can assist with setting up for the jubilee.

Club 100 Winners

March - Ken Brooks and Janet Soame

April - Marina Pinker and Martin Wilson

The South Leigh Charity

The South Leigh Charity has been helping people in the parish for centuries. It has wide-ranging powers and can provide help in many ways.

If you know someone who might benefit from what the charity has to offer, would like to make a donation to it or would like to become a trustee, please contact, in confidence, one of the Trustees:

Richard Law, Chair
(01993 773355 or
ralaw1984@gmail.com)

John Ashwell (703534)

Sue Washington (775574)

Karen Wilson (771346)

Rita Sawrey-Woodwards

PARISH WARDEN UPDATE

Russell & Anne Cherry

Underfoot conditions have inevitably improved after the soggy going (with deep surface water in many places), plus fallen trees & debris following February's storms. At the time of writing (early May) the issue of non-reinstatement of footpaths through crops—as mentioned in our previous updates—is still relevant, with the same routes affected; as previously mentioned, this has been reported by us several times, requesting early reinstatement to provide easier user access after difficulties experienced over recent years!

A new issue is that the bottom step on the recently installed replacement stile into field behind Homans Farm has been missing since before Easter! This was reported to the Parish Council straightaway, so hopefully this stile will soon be fully restored. On a positive note, the wobbly step/rotten support on stile at the Limb Brook crossing behind Gunn Cottage has been sorted.

We must make it clear that we are not responsible for the removal of vegetation that took place along Moor Lane in early April, & neither were we aware that this was taking place. We reported this to the P.C. as soon as it was drawn to our attention, & understand that other parishioners did so too.

It was disappointing not to have anyone turn up for the 2 light pruning working parties on the sunny mornings of the 1st weekend of April. However, we are so grateful to Martin Spurrier (again!) & Dick Pears for meeting up with us in Bonds Lane in early April to clear the fallen & “hanging” trees, & therefore make the route both clear & safe. Martin offered the services of his tractor & chainsaws; the tractor was brilliant at shifting the heavier timber into the sides! By the way, a PPW's remit

is to undertake light pruning only but, clearly, accepting this kind offer of help as soon as it is practicable to gain access to the site brings a quick resolution to the issue.

It has been so encouraging to see an increasing use of our many Public Rights of Way (PRoWs) over the years, & particularly during the 2 year “Covid period”, which all helps to keep these routes on the ground as well as on the map! So, keep on using them, be sure to stay on them (they ARE well waymarked!), and—again—if everyone occasionally snips off intrusive long ends as they go this all helps to keep the way clear for all users next time!

We have decided that having taken on the role of PPWs from when the PPW network in Oxfordshire was developed in April 2013 it is now time for us to stand down. We informed the P.C. of our decision in mid-April, saying that we will continue in the role until the end of March 2023, thus completing 10 years as PPWs.

We are delighted to report that we have just heard that D'Arcy & Evadne Adrian-Vallance have stepped forward, agreeing to take on this vital role to provide continuity & to help ensure that accessibility of the PRoW network is maintained for the benefit of all its users. We trust that D'Arcy & Evadne will, like us, find the PPW role both an enjoyable & rewarding one, while at the same time being able to appreciate all the lovely countryside right here in our parish. **P.S.** As you read this, D'Arcy & Evadne will already be in place as Parish Path Wardens, having agreed to take on this role with immediate effect just a few days after the above article (our final update as PPWs) was written!

QUIZ

Solve these cryptic clues to reveal flowers. Answers appear page 16

- 1 SWEEPER (5); 2 CHANGE CLIMATES (8); 3 AFTER MORNING IN AMERICA (5);
- 4 CROCODILE BRIEFLY GETS TO THE STATES (6); 5 CHANGE HER LABEL (8)
- 6 GOT UP TO FOLLOW HOUND (3,4); 7 UPSET I'D SAY, “GIVE ME YOUR ANSWER DO” (5)
- 8 CATHEDRAL RINGER (10,4); 9 A MOSTLY IRISH SPECIES (4)
- 10 AND THEY ACCOMPANY GENTLEMEN TO FOLLOW TEST CRICKET HERE (5,3,6);
- 11 TEAR ABOUT FOLLOWING VOLCANIC FLOW (8); 12 FLOWER SEEN IN DUCKLINGTON (4)
- 13 DETECTED, FOUND IN PORCH IDEALLY (7,6); 14 POLES IN SCOTTISH RIVER (5);
- 15 12 A.M. OR 12 P.M. BY THE SOUND OF IT (5); 16 VET COMES TO CLUBHOUSE SHOWN ON O.S. MAP(5);
- 17 TATTY BIRD FOUND IN METRO BIN (6,5); 18 UPSET A WORRY (6);
- 19 MACHO LIME BLENDED FOR A TEA (9); 20 BOWL 6 BALLS AFTER MAKING 150 (6)

LUCKY FOR SOME

Martin S



Friday 13th has always been lucky for our family and so we hope it is for our Ukrainian guests.

Lysette Nicholls introduced us on line and we immediately thought that the Nagirniys looked like the perfect couple for us.



I picked up Sasha Nagirniy (62) and Lilly (a bit younger) from Birmingham airport on Friday 13th evening and we instantly recognised each other from our video calls in the previous week. Lots of hugging and speaking languages none of us understood! They had one suitcase wrapped in cling film and a rucksack. Then it was a super clear drive home in the growing dark.

Fortunately, their daughter-in-law, who speaks very workable English, was arriving in the UK just before we first contacted our guests so she was a great help in providing the info for the visa applications etc. Sasha's and Lilly's English is not great, but the iphone translation tools help a lot.

To our amazement, the visas came through in three working days, so we had to gear up quickly!

A new life begins

I picked up Sasha and Lilly at Birmingham. They had flown from Krakaw, and we got home at 10pm. We had a

glass of wine and all went to bed.

In the glorious sunny Saturday morning, I found them both up early tidying our garage and weeding our flower beds!

We then walked Bond's Lane, the church, Station Road and back to The Manor House cottage. They were buzzing and just wanted to work. They are truly lovely, hard-working, people and we are thrilled to have them.

Since then, the admin has been a pain. One government department after the other, although well intended, sends you to another and no one knows all the answers. More importantly, you have to find out for yourself the sequence in which you need to address the multiple issues: ie bank accounts (the vital first step), National Insurance numbers, Biometric permits, Universal Credit, the 'welcome' £200, phone SIM card for UK phone, and work. Get it wrong, and you remain on Square One and stay there several times over.

Everyone wants to help but no one knows the answers beyond their own specific brief. I guess it's early days.

Looking ahead

As I write this, we are five days in to this adventure. Rev. Simon Kirby's meeting in the Corn Exchange on Thursday 19th for guests and hosts should be a great opportunity to exchange contacts, get Ukrainians to meet Ukrainians, and for us all to gather and to exchange information. The meeting was a great success.

If it's an adventure for us, can you imagine what it is for them? And then on the Sunday morning, our couple heard that their son had been injured in a motorcycle accident in Kiev and had broken both arms. They didn't need that.

As I say, this is an adventure and nothing is going to be perfect for anyone. But let's hope Friday 13th turns out well for them. We sincerely hope so,

MS

If anyone would like to host please contact lysette@southleighandhighcogges-pc.gov.uk

P.S At going to press, we are day ten. Good progress: Bank Account open, Councils £250 value store cards received (x2), Vodafone 6 month free SIM cards received, £50 Red Cross cards arranged. Biometric test booked, job interviews this week. Happy to share advice. martinspurrier@hotmail.com

DISCLAIMER

ANY OPINIONS EXPRESSED IN THIS NEWSLETTER ARE NOT NECESSARILY THOSE OF THE EDITORS.

Please keep up to date by looking at the Facebook page or the website: www.southleighandhighcogges-pc.gov.uk

If you are not currently on the residents' circulatory list please contact Nicky Brooks to receive important updates.

newsletter@southleighandhighcogges-pc.gov.uk

COPY Deadlines

South Leigh News

August 18th 2022

November 18th 2022

The South Leigh News Photograph Requests

South Leigh News and High Cogges would like to publish photos taken by villagers in each edition capturing our Parish.

We won't be able to publish everyone's, however we shall choose photos that are best suited to the edition.

A star photo will be selected to go on the front page of the newsletter. Please can you email any photos to : newsletter@southleighandhighcogges-pc.gov.uk

QUIZ ANSWERS

1 BROOM 2 CLEMATIS 3 ERICA 4 CROCUS 5 HAREBELL 6 DOG ROSE 7 DAISY 8 CANTERBURY BELL 9 IRIS 10 LORDS AND LADIES 11 LAVATERA 12 LING 13 SPOTTED ORCHID 14 TANSY 15 THYME 16 VETCH 17 RAGGED ROBIN 18 YARROW 19 CHAMOMILE 20 CLOVER

South Leigh Jubilee Celebrations June 2022

Photographer and Collator needed

The Jubilee team have finalised the arrangements for some exciting events in the village to celebrate the Queen's 70th Jubilee. Is there anyone in the village who would be interested in photographing/videoing all that goes on during these celebrations to make a village archive, digital and/or published, of this unique event for future generations to enjoy sharing what we did in 2022? Many individuals will undoubtedly be snapping away on their mobiles to record their bit of the celebrations and it would be good if these could be collated and included in the archive. Is there anyone who is good with the digital side of processing photographs who would be interested in helping out with this important side of the celebrations?

I look forward to hearing from you.

Rita E Sawrey-Woodwards

rita@southleighandhighcogges-pc.gov

Heather's Garden

LOCAL HONEY

HOME-MADE PRESERVES

My home-grown fruit, no spraying

Windrush Cottage, Station Road

Honesty box selection always available in porch (no need to knock)

Have you tried my fresh Lemon Curd?