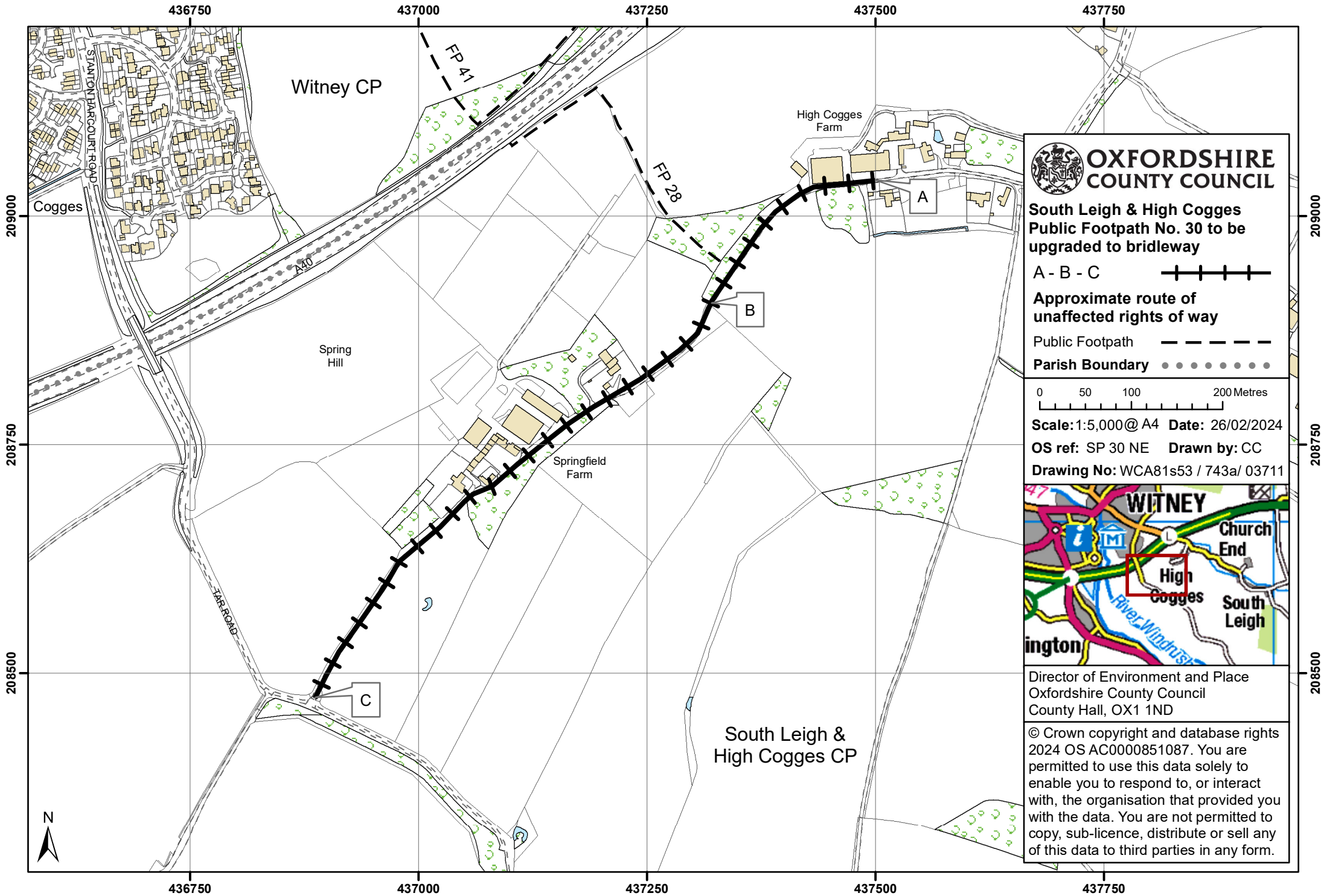



# The Oxfordshire County Council, South Leigh & High Cogges Bridleway No. 30 Modification Order 2024





**OXFORDSHIRE COUNTY COUNCIL**

**South Leigh & High Cogges Public Footpath No. 30 to be upgraded to bridleway**

A - B - C 

**Approximate route of unaffected rights of way**

Public Footpath 

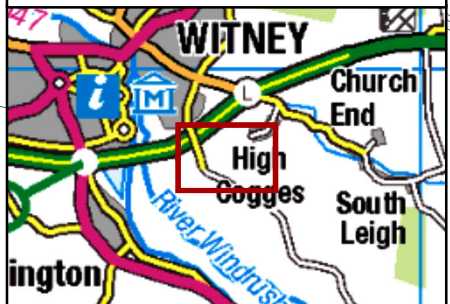
Parish Boundary 

0 50 100 200 Metres

Scale: 1:5,000@ A4 Date: 26/02/2024

OS ref: SP 30 NE Drawn by: CC

Drawing No: WCA81s53 / 743a/ 03711



Director of Environment and Place  
Oxfordshire County Council  
County Hall, OX1 1ND

© Crown copyright and database rights  
2024 OS AC0000851087. You are permitted to use this data solely to enable you to respond to, or interact with, the organisation that provided you with the data. You are not permitted to copy, sub-licence, distribute or sell any of this data to third parties in any form.