

SOUTH LEIGH AND HIGH COGGES PARISH COUNCIL

PARISH COUNCIL MEETING Thursday 31st October 2024, 7:30pm

in the Village Hall

Councillors Present: Dick Pears (Deputy Chair) (DP)
Caroline Auger (CA)
Caroline Gane (CG)
Jacqui Napier-Munn (JNM)
Peter Grant (PG)
David Auger (Clerk) (DA)

Attendees 1 Parishioner

AGENDA

1. Apologies and Councillors and not present - Lysette Nicholls (Chair), Dan Levy, Andy Goodwin, Carl Rylett.
Introduction to the conduct of meeting
2. Declarations of Interest – none.
3. To approve the minutes of the previous meeting as being a true record of the proceedings – a copy having been circulated in advance to the Councillors – Proposed CG, seconded PG, passed unanimously. – DP concerned over the level of venting on WhatsApp by parishioners regarding the installation of traffic calming chicanes and yet very few, if any, attended PC meetings, DP has also received emails from parishioners in a similar vein. DP to circulate an email response for consideration of the parish councillors.
4. Opportunity for any parishioner to raise a matter of concern. *This will not normally be minuted fully but issues that are raised and which the PC consider need to be looked at will be noted in the minutes and appear on next agenda. This is the only part of the meeting where members of the public are permitted to speak which will be limited in time and the Chair will determine how long each member of the public may speak for and each person shall not exceed three minutes.* Tree planting – Savills (Eynsham Estates agents) have finally given the go-ahead for planting on the Barnard Gate Road on one side of the road from Field House entrance to the sharp bend towards Barnard Gate.
5. Politician reports – still no response from Callum Miller, except for automatic response. Report from Dan Levy which summarised that funds had been released so that the Eynsham Park and Ride

SOUTH LEIGH AND HIGH COGGES PARISH COUNCIL

can be linked to A40, improvements to the Eynsham Roundabout and the junction at Cassington with new crossings for pedestrians, new bus stops and improved bike lane between Eynsham and Wolvercote. There will be further consultation for the A40 project west of Eynsham. The County Council have been working with SLHCPC on both traffic calming and flood alleviation.

6. Finance and payments to approve – see Appendix 1. – accepted, proposed JNM, seconded PG, carried unanimously. Balances in accounts £15,599.04 and £5,463.91
7. (no item)
8. Updates and reports and or info
 - (1) Traffic Calming – position of some gates have had to be altered because of Gigaclear cabling. Venting/complaining particularly on WhatsApp (see item 3. above). PC to respond to complainants and circulate to village.
 - (2) Shore's Green and in particular Condition 8 and 10 – OCC response on Condition 8 & 10 (lighting and tree planting) – see Appendix 2.
 - (3) Conservation Area – Conservation group have attempted to get another meeting with WODC and have been offered dates in November and December with potential consultation meeting in February. There had been a meeting 23rd October with Phil Shaw, Tara Hayek of WODC and Martin Spurrier, Graham Keevill, Gary Nicholls from the Conservation Area group – to consider the draft application – WODC agreed village qualifies, thought that doc was there 7 or 8 out of 10, there was detailed discussion and substantial mutual input with the need to have further public involvement – perhaps an open house for a few hours – perhaps a public meeting in February, update to PC on draft document at November meeting, with the final formal application presented to WODC by March 2025

SOUTH LEIGH AND HIGH COGGES PARISH COUNCIL

- (4) Flooding – as a matter of information High Cogges flooding site visit with camera was not successful, one resident persuaded them to come back and try again for free, awaiting second site visit to take place, the rest of the village was the subject of continuing work with OCC.
 - (5) Village Security Plans – Church don't want anything attached to the fabric (walls etc.) of the church partly due to the extreme difficulty in getting permission. Village Hall Committee are also reluctant to have cameras fixed to hall, CA to ask VH committee again at next meeting
 - (6) Hearing loop for Village Hall – DA had contacted contractor to determine if he was able to carry out survey, as he was experienced in doing this, to try to avoid this cost, this is not possible as it is not just a case of taking dimensions and needs experienced person to carry this out, DA to contact contractor to get dates for survey. It was agreed that this issue would be finalised by the next PC meeting in November.
 - (7) Playground – Playground committee provided a report to CG which will be circulated; bank account in process of changing to online banking; CG to be a signatory when change is complete
 - (8) Local Plan / Neighbourhood Plan – nothing to report as yet.
 - (9) Twelve Acre Farm Solar Farm – still not connected, therefore money not due.
 - (10) Tar Farm Solar Farm – letter from Bluefield progress report still moving but slowly, working towards 2028 connection i.e. working on site 2027, move/extra inverters required nearer to Tar Farm, probably need planning for that. DP asked re advance payment.
9. (no item)
10. Review of actions or discussions from last meeting

SOUTH LEIGH AND HIGH COGGES PARISH COUNCIL

11. (no item)
12. Planning applications – none to consider.
13. Opportunity for any County Councillor and / or District Councillor to update the Parish Council on any matter of relevance or concern – report from Dan Levy summarised above.
14. Date of next Parish Council Meeting Thursday 28th November 7:30pm
15. Points of information – a parishioner had emailed an objection to the proposal of making Barnard Gate Junction no right turn. DP to circulate Super user information asking for interested people to volunteer. A parishioner had rung to say that the South Leigh sign near Shuttles Cottage had vanished, but it had been removed as part of the scheme and would be replaced.

SLHCPC

SOUTH LEIGH AND HIGH COGGES PARISH COUNCIL

APPENDIX 1.

Schedule of payments since last PC Meeting

Friday, 27 September 2024

APC GARDEN SERVICE - £180.00

Monday, 14 October 2024

MOORE - £252.00

Monday, 21 October 2024

MRS C AUGER + MR D AUGER - £204.00

MOORE - £252.00

MRS C AUGER + MR D AUGER - £204.00

Tuesday, 22 October 2024

HMRC CUMBERNAULD - £50.80

HMRC CUMBERNAULD - £50.80

FISCAL SOLUTIONS - £50.00

SOUTH LEIGH VILLAGE HALL - £250.00

SOUTH LEIGH AND HIGH COGGES PARISH COUNCIL

APPENDIX 2.

COMMENTS FROM SOUTH LEIGH AND HIGH COGGES PC

Condition 8 – Street Lighting

- In relation to LGLC0028 and 0029 could the column heights be reduced?
- Landscaping could be improved by planting larger trees particularly between all the lighting on the South Leigh Road as well as the slip road and High Cogges

Condition 10 - Landscaping

- LGLC-0028 and 29 whilst outside the red line boundary are within the existing highway boundary and are only being constructed because of the Shore's Green junction project and therefore ask that further planting of large trees are inserted or as we said re condition 8 relating to lighting the height of the columns is reduced if safety allows for that.

OCC RESPONSE

Street Lighting

The lighting design has been developed to achieve a balance between a number of road safety, personal security and environmental considerations. Significant efforts have been made in the lighting design to mitigate environmental impacts including:

- Luminaires have the LED panel recessed into the housing of the lantern, and with very specific highly directional optic set ups light is only directed where it needs to be on the road. There is no up light from these units, and minimal light spill outside of the carriageway and footway/verge. There will be no light spill or intrusion into properties in High Cogges which are over 150m away.
- The lowest possible output LED luminaires have been used and these will be dimmed to 75% output between the hours of 00:00 and 06:00 to mitigate light intrusion and reduce energy consumption.
- Selected luminaires on the south of the B4022 and west side of South Leigh Road will be fitted with backshields to reduce light spill on adjacent ecological receptors and address concerns about visual intrusion by local residents.

However, a critical priority is also providing compliant highway lighting to reduce vehicle collisions and provide a safe and secure environment for pedestrians and cyclists travelling through this area. In this regard, the two lighting columns LGLC0028 and 0029 on west side of South Leigh Road have been provided to ensure that vehicles and cyclists approaching the B4022/South Leigh Road junction from the South Leigh Road side road are visible to high-speed traffic exiting the A40 westbound off-slip road.

Reduced Column Heights

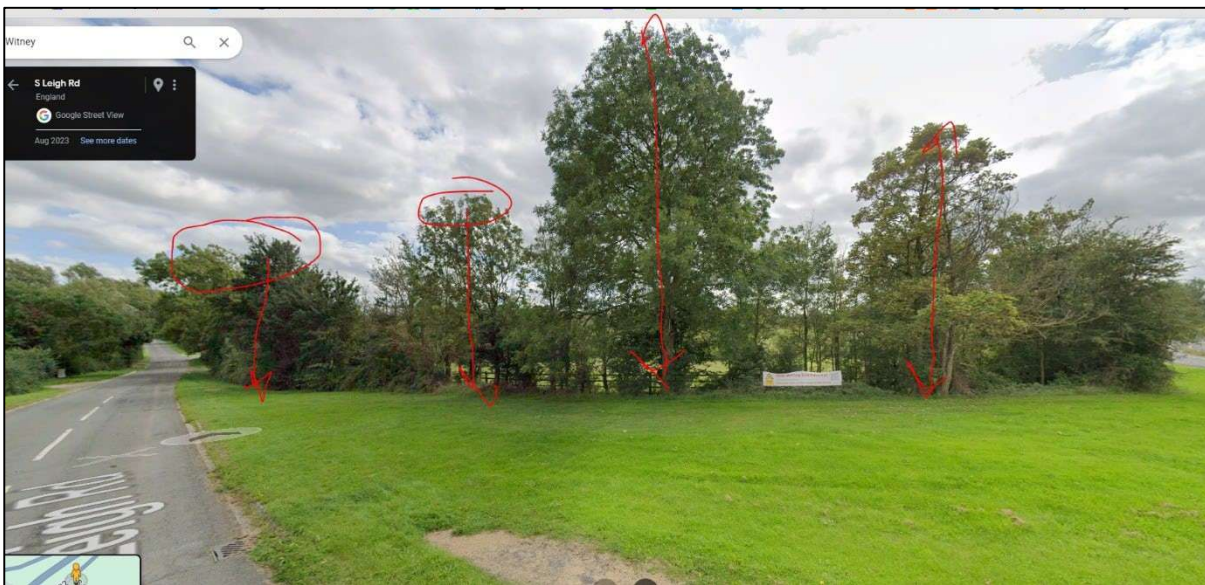
Our design team have considered if the heights of the two lighting columns LGLC0028 and 0029 could be reduced. However, that will require more lighting columns at more frequent spacing along this section of South Leigh Road to maintain the same compliant lighting levels and to ensure visibility for drivers. Further, it would also mean more electrical connections and ducting, higher energy consumption, higher maintenance costs and with additional clashes with utilities and

SOUTH LEIGH AND HIGH COGGES PARISH COUNCIL

drainage. This will all result in significant additional cost. Whilst a reduction in the column height would very slightly reduce visibility from nearby residential properties the impact of adding more lighting columns would be an increase in their visibility through the trees and also an increase the amount street furniture/clutter. Therefore, on following and overall consideration of these issues no change to the design is proposed.

Additional Landscaping

The new lighting columns proposed will be 8m in height. The existing trees also located along the verge on the west side of South Leigh Road range between 5m to 8m in height see image below. The existing trees will therefore provide some screening of the proposed lighting columns and reduce their visibility from the properties in High Cogges. So, whilst the lighting columns and luminaires will be slightly visible through and on the tops of the trees, we do not feel additional vegetation is required. Nearby properties are set back over 150m away and the visual impact will not be significant.



Regarding the suggestion of planting additional large trees to screen the lighting columns LGLC0028 and 0029 (see below), the design team have identified that the available space for large tree pits within the immediate vicinity of the column is limited (see plan below), is not recommended within 10m of new street light columns and again will result in conflicts with existing and planned utilities which will make this difficult, add cost and provide limited benefit. Whatever the lighting columns heights or level of tree screening, they may always be slightly visible from properties in High Cogges (over 150m away) either through the trees or on the tops of trees, particularly in the winter months. So again, considering all these issues no change to the landscape design is proposed.

Regarding the need for additional planting between the street lighting alongside the B4022 /new on slip and High Cogges, some additional tree planting was already agreed through discussion with South Leigh and High Cogges Parish Council in summer 2023. This additional tree planting alongside the on-slip and around the balancing pond is already incorporated within the detailed Scheme landscaping design submitted which will provide screening to the new lighting.

SOUTH LEIGH AND HIGH COGGES PARISH COUNCIL

